

General Guidelines

- It is the user's responsibility to read and follow all instructions.
- Keep these instructions with the product at all times and review before each use.
- It is the responsibility of this product's owner to furnish the instructions to any person that borrows or purchases the product.
- Inspect the product before use to ensure it is assembled properly and all parts are in safe working order and free of defects.
- Never modify this product in any way.
- The ramp must make **FULL CONTACT** with the ground. Do not use the ramp as a bridge under any circumstances.
- Tow Ramps are meant to only be used with vehicle tires. Do not use Tow Ramps for loading toolboxes or any other item that has small caster wheels.
- All circumstances cannot be addressed in these instructions. Please use common sense and practice general safety measurements when using this product.
- Parts and/or instructions are subject to change without notice.



BT-TT-7-10 (1-pc model)



BT-TT-7-10-2 (2-pc model)
Same dimensions as 1-pc model

Safety

- Before using the ramps ensure other persons are clear of the vehicle and the ramps.
- Ensure that the ramps are free from damage before use.
- Do not exceed the rated weight capacity of 5,000 lbs. maximum axle capacity.
- Do not use with tires that exceed 14 inches in width.
- Only use on dry, level, hard surfaces. Do not use if tires are wet.
- Drive slowly and cautiously onto and off of the ramps. Never accelerate or brake suddenly.
- Another person, standing clear of the vehicle, should observe and guide the driver when using the ramps.

Operations

Tow Ramps may be used with flatbed tow trucks and tilt trailers. Use instructions as they apply.

1. Inspect the ramps to make sure they are not damaged. Make sure your flatbed/trailer and vehicle are compatible with the ramps.
2. Gently lower the flatbed/trailer bed and place on the Tow Ramp notch. Be careful to properly position the flatbed/trailer bed on the notch. Excessive force may cause damage to the notch. (Fig. 1 and 2)
3. Check that the position of the Tow Ramps is in line with the vehicle wheels and that the steering wheel is aligned so the tires are straight.
4. Carefully ascend the ramps in a slow and controlled manner until the vehicle is safely on the flatbed/trailer bed. If driving the vehicle up the ramps, never accelerate or brake suddenly. Once the vehicle is safely loaded on the flatbed/trailer bed, the Tow Ramps may be removed.
5. When unloading the vehicle, gently lower the flatbed/trailer bed and place it on the Tow Ramp notch. Check that the position of the Tow Ramps is in line with the vehicle wheels and the steering wheel is aligned so the tires are straight. Carefully descend the ramps in a slow and controlled manner until the vehicle is safely on the ground.



Fig. 1: Gently lower the flatbed/trailer bed and place on the Tow Ramp notch.



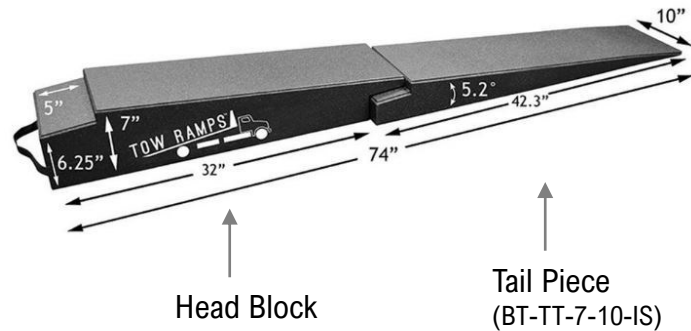
Fig. 2: Be careful to properly position the flatbed/trailer bed on the notch. **DO NOT USE EXCESSIVE FORCE.**

Tow Ramps 2-pc Model Components

Part #BT-TT-7-10-2, BT-TT-7-10-IS

Tow Ramps are available in a 2-pc model (Part #BT-TT-7-10-2) which is comprised of a head block and tail piece. The tail piece (Part #BT-TT-7-10-IS) is also available separately.

NOTE: When using the BT-TT-7-10-2, the head block may not be used without the tail piece.

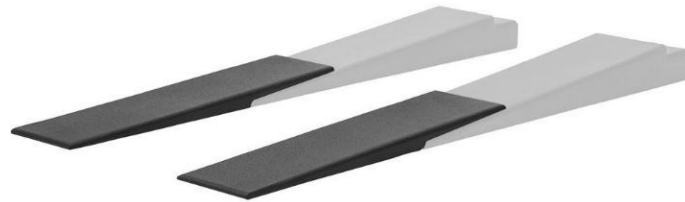


XTenders for Tow Ramps

Part #BT-TT-7-EX-10

The BT-TT-7-EX-10 is designed with a 4-degree angle of approach. When a reduced incline angle is needed, the BT-TT-7-EX-10 may be used in conjunction with the BT-TT-7-10, BT-TT-7-10-2, or BT-TT-7-10-IS.

- To use the ramp extensions, place each piece as illustrated in the image.
- Follow all operation instructions accordingly.



Product Warranty and Liability

Race Ramps purchased from an authorized dealer or directly from Race Ramps LLC are backed by a one-year warranty. Our warranty is strictly limited to the repair or replacement of manufacturer defects and does not cover damage to a car, personal injury, labor, or any other damage or injury. Race Ramps LLC is not responsible for the damage caused by improper or unintended use. In no event shall Race Ramps LLC be responsible for consequential damage or costs. The warranty shall terminate one year from the date of purchase by the original owner and is not transferable. Because we are continuously conducting research and development, specifications are subject to change without notice. Those items sold by Race Ramps LLC, but manufactured by other companies are subject to the manufacturer's warranty and policy.

Questions? Please contact Race Ramps at 800-213-5883 or email support@raceramps.com.